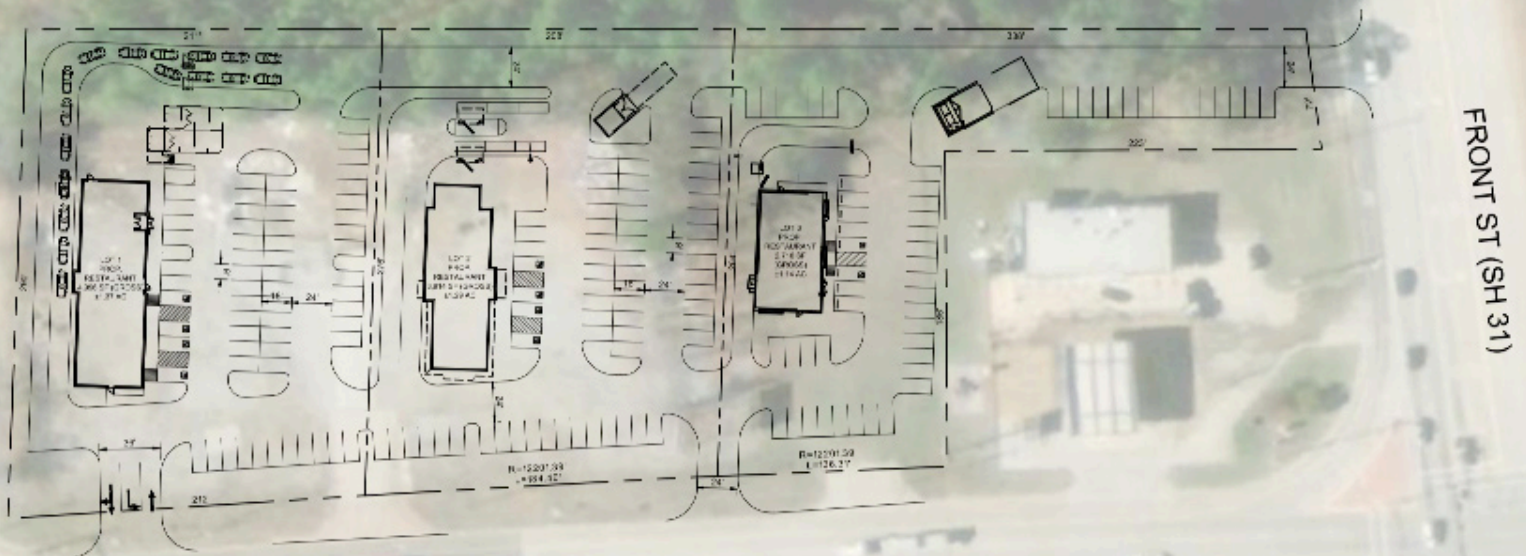




+/-3.8 ACRE OPPORTUNITY

SWC E. FRONT ST & LOOP 323, TYLER, TX 75702

PAD SITES AVAILABLE ALONG THE EXPANDING RETAIL TRADE DISTRICT OF EAST TYLER. THE 3.8 ACRE PROPERTY IS STRATEGICALLY LOCATED ACROSS FROM THE NEWLY CONSTRUCTED WALMART AND ALDI. JOIN OTHER AREA RETAILERS SUCH AS VALERO, DAIRY QUEEN, ALDI, AND WALMART.



KYLE GILL
 O 817.441.7400
 C 817.789.8030
 KGILL@LIBERTAS-RE.COM

JP NOLAND
 O 817.441.7400
 C 817.925.7414
 JP@LIBERTAS-RE.COM

MASON CUMMINGS
 O 817.441.7400
 C 949.374.2884
 MASON@LIBERTAS-RE.COM

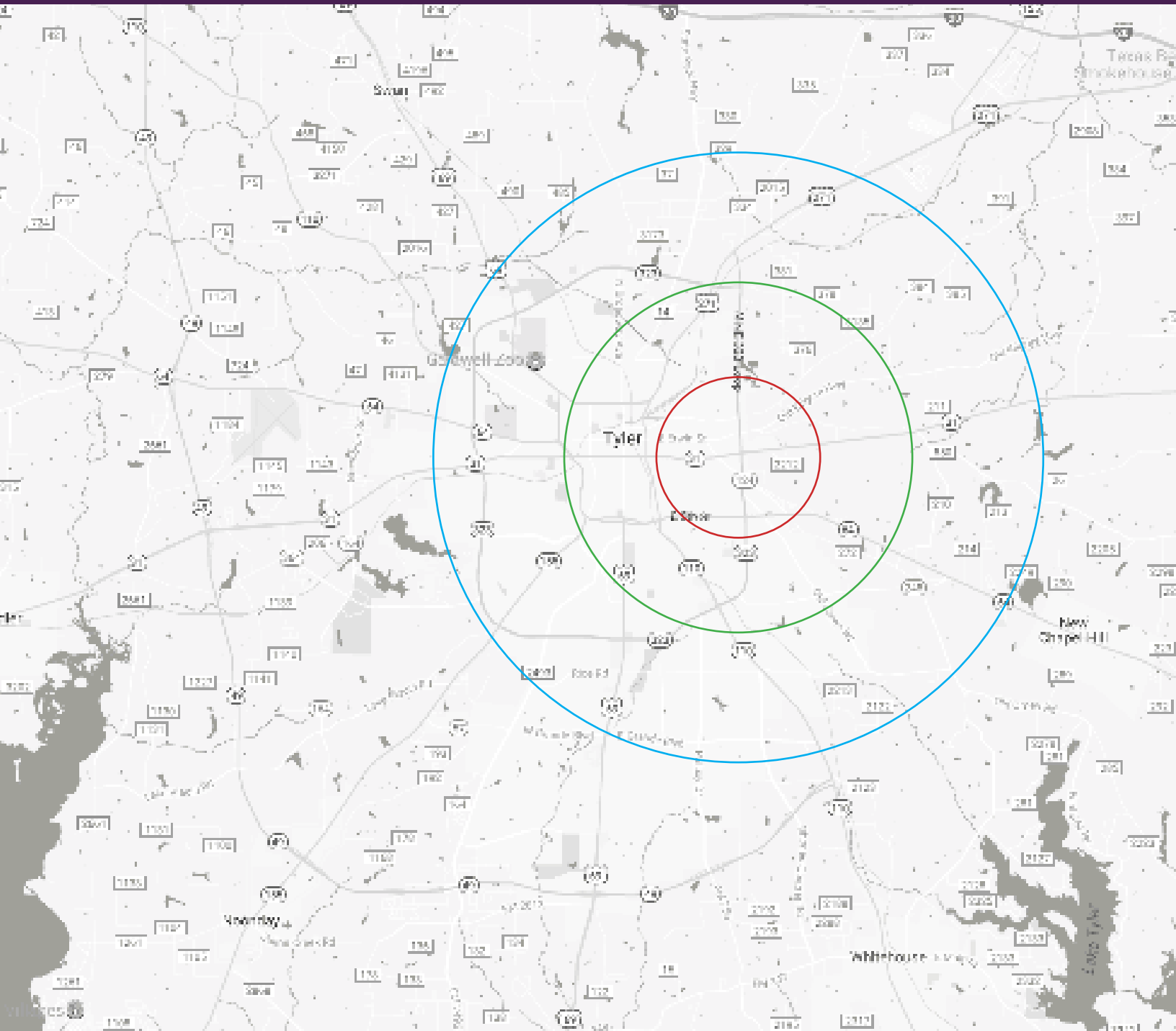
PRIMEREALTYUS.COM

SWC E. FRONT ST & LOOP 323, TYLER, TX 75702

LEASE +/-3.8 ACRES AVAILABLE



DELIVERY: AVAILABLE NOW



DEMOGRAPHICS	1 MILE	3 MILES	5 MILES
POPULATION	5,397	51,333	100,779
AVG HOUSEHOLD INCOME	\$47,039	\$60,704	\$64,910
HOUSEHOLDS	1,605	18,241	37,259



KYLE GILL
 O 817.441.7400
 C 817.789.8030
KGILL@LIBERTAS-RE.COM

JP NOLAND
 O 817.441.7400
 C 817.925.7414
JP@LIBERTAS-RE.COM

MASON CUMMINGS
 O 817.441.7400
 C 949.374.2884
MASON@LIBERTAS-RE.COM

PRIMEREALTYUS.COM